

A Balloon-based Vertebral Augmentation System

SYNFLATE[®]

Vertebral Balloon

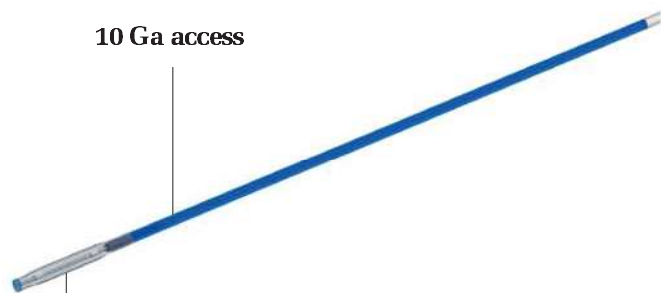
Surgical Technique



SYNFLATE® Vertebral Balloon

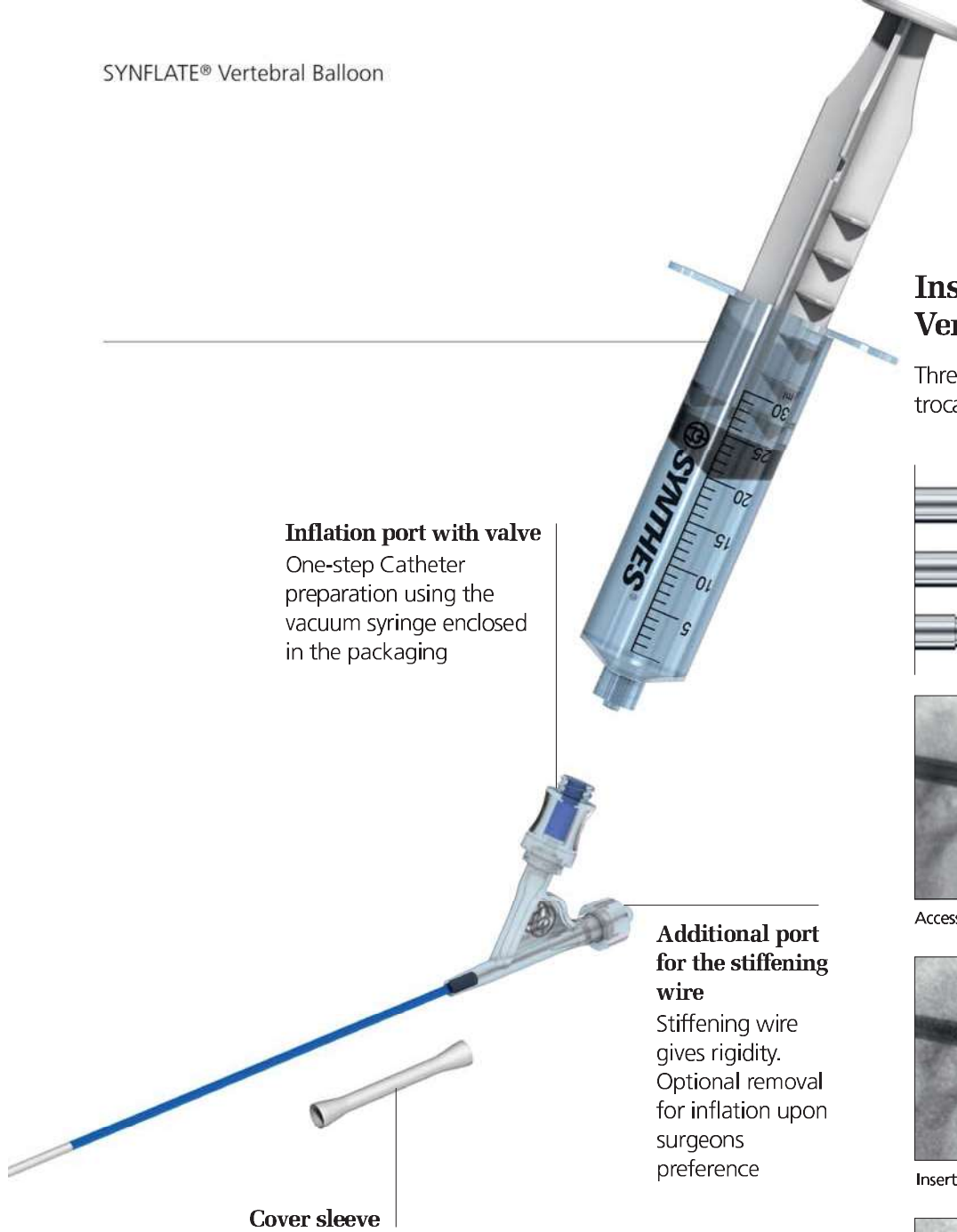


Two radiopaque markers
For X-ray visualization of the balloon
to facilitate placement



10 Ga access

3 balloon sizes
with a pre-inflation profile of 3.2mm

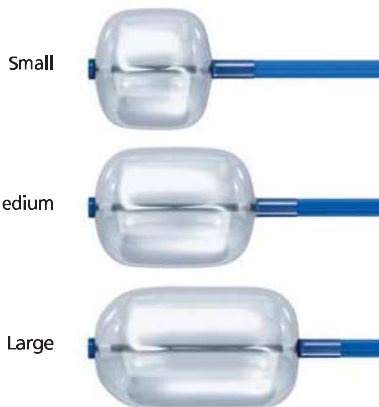


Inflation port with valve
 One-step Catheter preparation using the vacuum syringe enclosed in the packaging

Additional port for the stiffening wire
 Stiffening wire gives rigidity. Optional removal for inflation upon surgeons preference

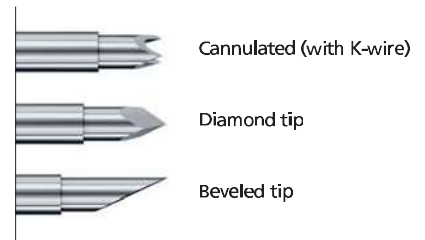
Cover sleeve

3 balloon sizes
 with a pre-inflation profile of 3.2mm

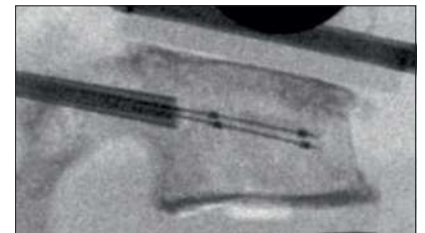


Insertion of the Synflate Vertebral Balloon

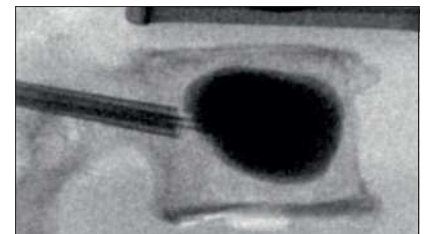
Three different options for access trocars



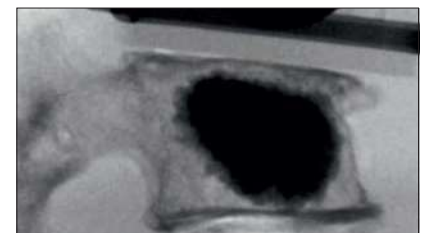
Access the Vertebral Body



Insertion of the Synflate Vertebral Balloon



Inflation of Synflate Vertebral Balloon



Injection of the bone filler (here Vertecem V+ Cement)